

# DON'T FORGET THE 4 R's . . . .

## "Reduce, Reuse, Recycle in Rensselaer!"

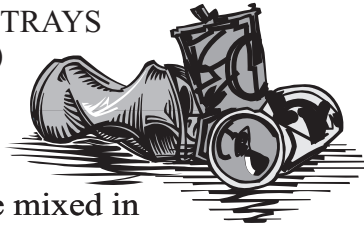


Tips for Curbside Recycling: **Keep all items separate (as listed below).**  
**Place all items in separate bags (plastic or paper), then place in recycling container.**



### ALUMINUM

CANS • FOIL • TRAYS  
(CLEAN)



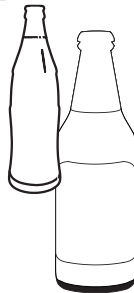
- ✓ Rinse Out
- ✓ Crush, if possible
- ✓ Bi-Metal cans can be mixed in
- ✓ Foil, Pie Pans also accepted
- ✓ Separate cans from other Aluminum (magnets won't attract Aluminum)

- NO PAINT CANS
- NO AEROSOL CANS

### GLASS BOTTLES & JARS

CLEAR • GREEN • BROWN

- ✓ Rinse Out
- ✓ Labels are okay
- ✓ Remove all lids and metal rings
- ✓ Separate by color



- NO LIGHT BULBS
- NO WINDOWS
- NO DISHES OR DRINKING GLASSES



### PLASTIC CONTAINERS

POP BOTTLES • MILK JUGS • SHAMPOO BOTTLES • DETERGENT/BLEACH JUGS • LARGE MOUTH CONTAINERS • COOKING OIL

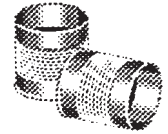
- ✓ Containers **must** have a  or  printed on the bottom.

- ✓ The lids must be removed and plastic containers should be crushed.

- NO MOTOR OIL CONTAINERS
- NO ANTI-FREEZE BOTTLES

### STEEL (TIN) CANS

- ✓ Rinse Out
- ✓ Remove Labels
- ✓ Flatten, if possible  
(The easiest and safest way is to remove both ends, put them into the can and step on the can to flatten it).



### PAPER PRODUCTS

NEWSPAPERS • PHONE BOOKS • MAGAZINES • JUNK MAIL • OFFICE PAPER - COMPUTER, COPIER, ETC.



- ✓ Put in paper bag or bundle
- ✓ Remove and separate slick inserts
- ✓ Must be clean and dry
- ✓ Separate newspapers, phone books and magazines

### CARDBOARD

CARDBOARD (CORRUGATED BOXES) • CEREAL BOXES, ETC.

- NO WAXED BOXES

### CENTRAL DROP OFF LOCATION

820 E. Walnut Street  
Rensselaer, Indiana

**OPEN MONDAY THRU FRIDAY**  
**7:30 AM - 4:00 PM**  
**SATURDAY 8:00AM - NOON**  
**BI-WEEKLY CURBSIDE PICK-UP**



Curbside recycling containers  
may be picked up at:

City Street Department  
820 E. Walnut Street  
(219) 866-7833 or 5530  
(2 per household)